



Naturlandhof Udo Rumpel

Basics of the compost production
On-farm composting

**EUKI Academy: Online-seminar "On-farm
composting" - 03.03.2023**



Business sectors



Solar energy

Civil-wind-companies

Agriculture

- ca. 50 ha farmland
- ca. 8 ha greenland
- fruits: clover with gras, wheat, spelt (Dinkel), red beet, maize (corn), field bean, soja, peas (Platterbsen)
- livestock: 8 horses
- climate in northern of Bavaria, between Frankfurt and Nürnberg: 9,5 °C average, ca. 450 mm rain
- composting area



Basics of the compost production

- composting – anaerobic digester, biogas
- complexity
- temperature
- parameters: oxygen, humidity and temperature

Different in-put material



Different in-put material





This is a very bad example of a composting area



Building of a row with a feed mixer



Manure spreader with lying waves



You can build 2 rows side by side and after 1-2 weeks you bring the right row on the left



The new row: The area which was outside is now inside, so the hygienisation can work better



Small compost turner for rows with 2,5m wide and 1,8m high, turning wave inside



Function of the compost turner

After mixing the different material for the storage





A big compost turner, not depending of dimensions of the rows



The turning wave is on the left side and a conveyor belt brings the material to the left side



The whole material is completely mixed



After 2 or 3 times turning the material, you have good compost for agriculture (sure hygienisation), not for gardening



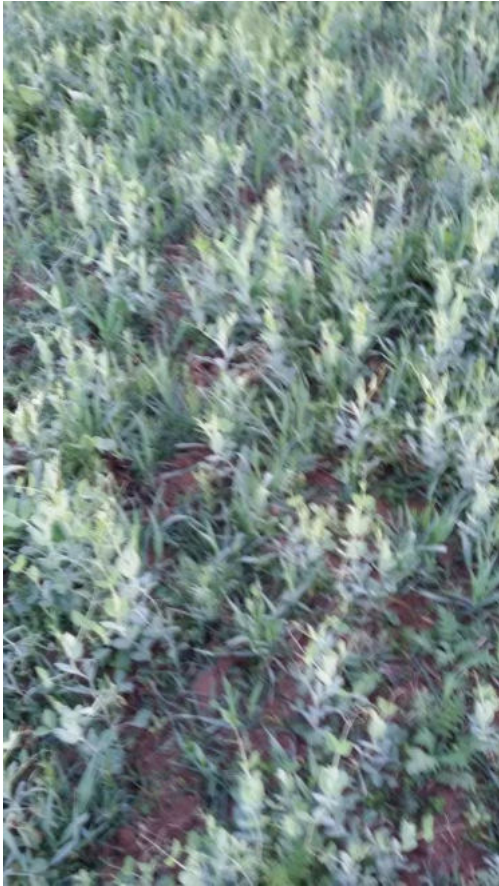
My composting area, built in 2016
Ca. 1400 m², about 80.000 €, collecting-basin for
the rainwater



Inter-crop



Green peas, peas (Platterbsen), vetch (Wicken), buckwheat, phacelia, sunflowers, rectich, oats





Thank you very much

Questions?



Danke!